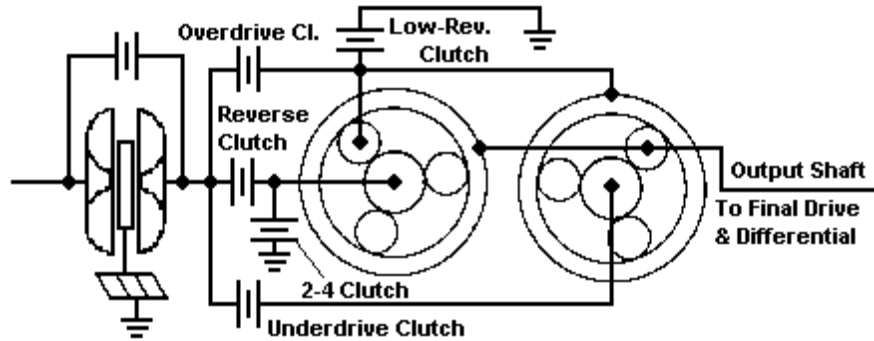


Student Name \_\_\_\_\_

Date \_\_\_\_\_

Directions: The clutch and band arrangement for a DaimlerChrysler 41TE (A-604) is shown below. Circle the names of the input apply devices. Draw a square around the names of the reaction apply devices.

Note: The front gearset is to the left and the rear gearset is to the right.



- 1st gear: The input apply device is the \_\_\_\_\_; it drives the \_\_\_\_\_.  
 Color the input apply device and planetary member blue.  
 The reaction apply device is the \_\_\_\_\_; it holds the \_\_\_\_\_.  
 Color the reaction apply device and planetary member red.

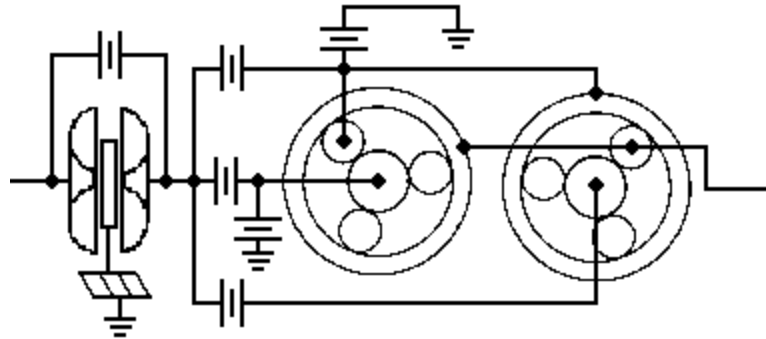
What are the planet gears in the front gearset doing?

Ring \_\_\_\_\_, Carrier \_\_\_\_\_  
 Sun \_\_\_\_\_, Pinions \_\_\_\_\_

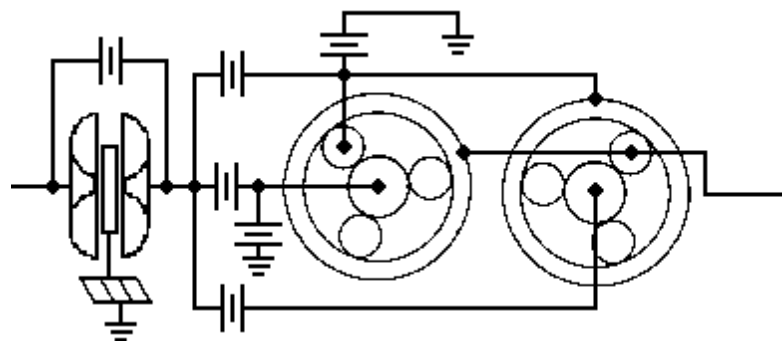
**Mark these: R** for rotating, **L** for locked (Stationary), or **W** for Walking.

What are the planet gears in the rear gearset doing?

Ring \_\_\_\_\_, Carrier \_\_\_\_\_  
 Sun \_\_\_\_\_, Pinions \_\_\_\_\_



- 2nd gear: The input apply device is the \_\_\_\_\_; it drives the \_\_\_\_\_.  
 Color the input apply device and planetary member blue.  
 The reaction apply device is the \_\_\_\_\_; it holds the \_\_\_\_\_.  
 Color the reaction apply device and planetary member red.



What are the planet gears in the front gearset doing?

Ring \_\_\_\_\_, Carrier \_\_\_\_\_  
 Sun \_\_\_\_\_, Pinions \_\_\_\_\_

What are the planet gears in the rear gearset doing?

Ring \_\_\_\_\_, Carrier \_\_\_\_\_  
 Sun \_\_\_\_\_, Pinions \_\_\_\_\_

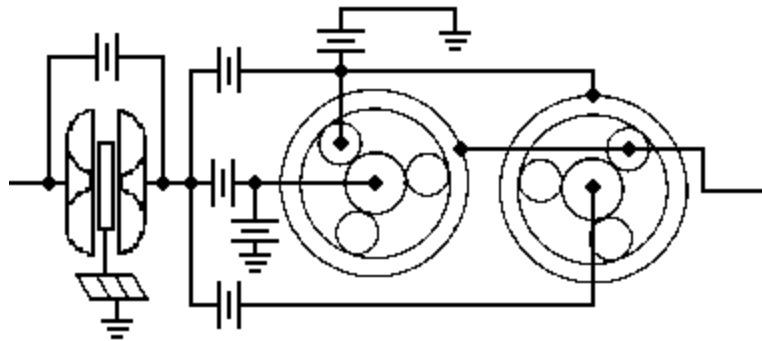
3. 3rd gear: The input apply device is the \_\_\_\_\_; it drives the \_\_\_\_\_.  
 Color the input apply device and planetary member blue.

What are the planet gears in the front gearset doing?

Ring \_\_\_\_\_, Carrier \_\_\_\_\_  
 Sun \_\_\_\_\_, Pinions \_\_\_\_\_

What are the planet gears in the rear gearset doing?

Ring \_\_\_\_\_, Carrier \_\_\_\_\_  
 Sun \_\_\_\_\_, Pinions \_\_\_\_\_



4. 4th gear: The input apply device is the \_\_\_\_\_; it drives the \_\_\_\_\_.  
 Color the input apply device and planetary member blue.

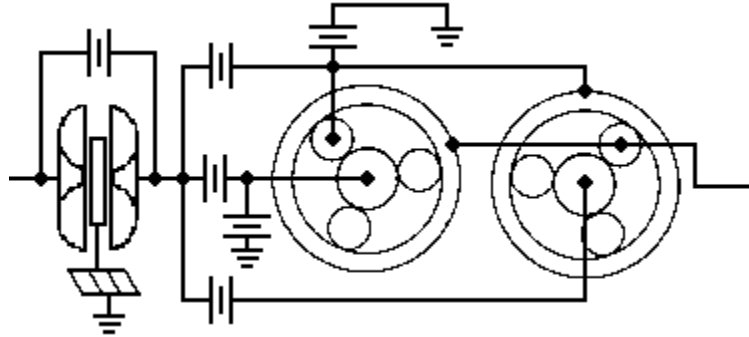
The reaction apply device is the \_\_\_\_\_; it holds the \_\_\_\_\_.  
 Color the reaction apply device and planetary member red.

What are the planet gears in the front gearset doing?

Ring \_\_\_\_\_, Carrier \_\_\_\_\_  
 Sun \_\_\_\_\_, Pinions \_\_\_\_\_

What are the planet gears in the rear gearset doing?

Ring \_\_\_\_\_, Carrier \_\_\_\_\_  
 Sun \_\_\_\_\_, Pinions \_\_\_\_\_



5. Reverse gear: The input apply device is the \_\_\_\_\_; it drives the \_\_\_\_\_.  
 Color the input apply device and planetary member blue.

The reaction apply device is the \_\_\_\_\_; it holds the \_\_\_\_\_.  
 Color the reaction apply device and planetary member red.

What are the planet gears in the front gearset doing?

Ring \_\_\_\_\_, Carrier \_\_\_\_\_  
 Sun \_\_\_\_\_, Pinions \_\_\_\_\_

What are the planet gears in the rear gearset doing?

Ring \_\_\_\_\_, Carrier \_\_\_\_\_  
 Sun \_\_\_\_\_, Pinions \_\_\_\_\_

